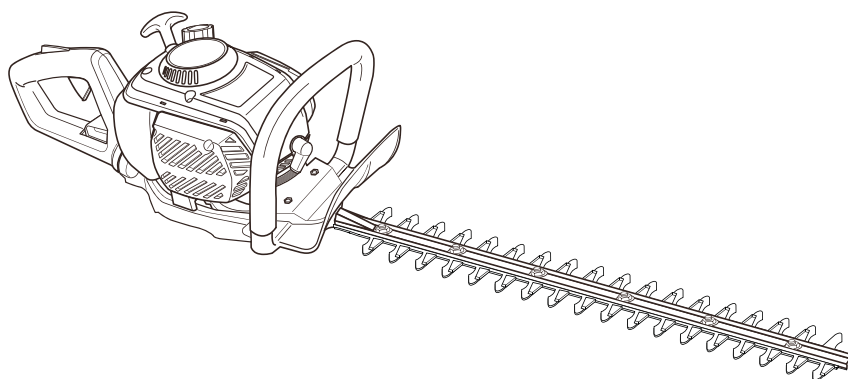


Petrol hedge trimmer 26cm³

OPERATOR'S MANUAL



FPHT26-3

EAN: 3663602940289



WARNING: read thoroughly the instruction booklet before using the machine.

Let's begin...

These instructions are for your safety. Please read through them thoroughly before use and retain them for future reference.



Getting **started**

01

SAFETY WARNINGS	02-11
YOUR PRODUCT	12-15
BEFORE YOU START	16-21
QUICK START	22-23



In **more detail**

24

OPERATING INSTRUCTIONS	25-31
MAINTENANCE AND CARE	32-38
TROUBLESHOOTING	39-40
RECYCLING AND DISPOSAL	41
GUARANTEE	42
CE DECLARATION OF CONFORMITY	43

SAFETY WARNINGS

- > This product is not intended for use by persons (including children) with reduced physical, sensory or mental capabilities, or lack of experience and knowledge, unless they have been given supervision or instruction concerning use of the product by a person responsible for their safety.
- > Children should be supervised to ensure that they do not play with the product.

PETROL POWERED HEDGE TRIMMER SAFETY WARNINGS



IMPORTANT
Read carefully before use
Keep for future reference

Training

- > Become familiar with the instruction manual before attempting to operate the product.

Preparation

- > This product can cause serious injuries. Read the instructions carefully for the correct handling, preparation, maintenance, starting and stopping of the product. Become familiar with all controls and the proper use of the product.
- > Never allow children to use the product.
- > Beware of overhead power lines.
- > Avoid operating while people, especially children, are nearby.
- > Dress properly! Do not wear loose clothing or jewellery, which can be caught in moving parts. Use of sturdy gloves, non-skid footwear and safety glasses is recommended.
- > Use extra care when handling fuels. They are flammable and the vapours are explosive. The following points should be observed.
 - Use only an approved container.
 - Never remove the fuel cap or add fuel with the power source running. Allow engine and exhaust components to cool down before refuelling.
 - Do not smoke.

- Never refuel indoors.
- Never store the product or fuel container inside where there is an open flame, such as near a water heater.
- If fuel is spilled, do not attempt to start the power source, but move the product away from the spillage before starting.
- Always replace and securely tighten the fuel cap after refuelling.
- If the fuel tank is drained, this should be done outdoors.
- > If the cutting mechanism strikes any foreign object or the product starts making any unusual noise or vibration, shut off the power source and allow the product to stop. Disconnect the spark plug wire from the spark plug and take the following steps:
 - inspect for damage;
 - check for, and tighten, any loose parts;
 - have any damaged parts replaced or repaired with parts having equivalent specifications.
- > Wear hearing protection!
- > Wear eye protection!
- > In an emergency switch the product off by immediately releasing the throttle trigger and setting the ignition switch to its off position “**STOP**”.

Operation

- > Stop the engine before cleaning or when clearing a blockage, checking, carrying out maintenance or working on the product, adjusting the working position of the cutting blade, leaving the product unattended.
- > Ensure that the product is correctly located in a designated working position before starting the engine.
- > While operating the product, always ensure that the operating position is safe and secure.
- > Do not operate the product with a damaged or excessively worn cutting blade.
- > To reduce fire hazards, keep the engine and silencer free of debris, leaves and excessive lubricant.
- > Always ensure that all handles and guards are fitted when using the product. Never attempt to use an incomplete product or one fitted with an unauthorised modification.
- > Always use two hands to operate a product fitted with two handles.

- > Always be aware of your surroundings and stay alert for possible hazards of which you may not be aware due to the noise of the product.
- > Never carelessly touch the product, you can burn yourself. While the product is in operation or shortly thereafter, its parts such as the exhaust pipe, engine, and other surfaces are extremely hot! Pay attention to the markings on the product.
- > Make sure that the air intake of the combustion engine is clear. Keep the air intake free of dust, dirt particles, gases and fumes.
- > Make sure that air circulation is adequate and good. The product must be easily accessible from all sides.

Maintenance and storage

- > When the product is stopped for servicing, inspection or storage, shut off the power source, disconnect the spark plug wire from the spark plug and make sure all moving parts have come to a stop. Allow the product to cool before making any inspections, adjustments, etc.
- > Store the product where the fuel vapour will not reach an open flame or spark. Always allow the product to cool down before storing.
- > When transporting or storing the product, always fit the cutting blade transport guard.

Additional safety warnings

- > Keep all parts of the body away from the cutting blade. Do not remove cut material or hold material to be cut when blades are moving. Make sure the switch is off when clearing jammed material. A moment of inattention while operating the product may result in serious personal injury.
- > Carry the product by the handle with the cutting blade stopped. When transporting or storing the product always fit the cutting blade cover. Proper handling of the product will reduce possible personal injury from the cutting blade.
- > Hold the product by insulated gripping surfaces only, because the cutting blade may contact hidden wiring. Cutting blades contacting a "live" wire may make exposed metal parts of the product "live" and could give the operator an electric shock.
- > Keep hands and feet away from the cutting blade at all times and especially when switching on the engine.

- > Do not try to grasp or remove trimmings when the product is running. Only remove trimmings when the product is switched off and disconnected from the power supply.
- > Check the work area for foreign objects before operation, e.g. wire fences. Take care that the cutting blade does not come into contact with wire or other metal objects.
- > Never hold the product by the guard.
- > Always be sure of a safe and secure operating position, whilst using the product. Always be sure of your footing when using steps and when using your product. Never use the product standing on steps or a ladder. Do not work over shoulder height.
- > Always ensure the safety guard supplied is fitted before using the product. Never attempt to use an incomplete product or one fitted with an unauthorised modification.
- > Check cutting blade regularly for damage, and if damaged repair immediately.
- > Do not overload the product.
- > Check immediately if the product starts to vibrate abnormally. Excessive vibration can cause injury.
- > Stop the engine and switch the product off when the cutting blade is blocked. Unplug the spark plug connector and remove the blockage. Inspect the cutting blade for damage before using the product again.
- > Follow the maintenance and repair instructions for this product. Never carry out any modifications of the product. Never change the pre-set rotary speed or the engine and product settings. Information about maintenance and repair is provided in this instruction manual.

Fuel handling

- > Always switch the product off, disconnect the spark plug connector and let the product cool down, before refuelling it. Fuel and fuel vapour are highly flammable. Take care when handling fuel. Never smoke when you are refuelling the product. Do not refuel the product, if there is an open fire in the vicinity!
- > Always use suitable aids such as funnels and filler necks. Do not spill any fuel on the product or its exhaust system. There is a risk of ignition. Remove spilled fuel carefully from all parts of the product. Any residue which may be present must have completely volatilised, before the product is put into operation!

- > Never use the product in environments where there is a risk of explosion. Exhaust gases and fuel fumes are noxious. Fuel fumes can ignite.
- > Never breathe in any fuel fumes, when you are refuelling the product. Never fill the tank in enclosed spaces, such as basements or sheds. There is a risk of poisoning and explosion!
- > Avoid skin contact with petrol.
- > Do not eat or drink, while you are refuelling the product. If you have swallowed petrol or oil, or if petrol or oil has got into your eyes, then seek the advice of a doctor immediately.
- > Close the tank lid immediately after filling the tank. Make sure that it is properly closed.
- > Never use the product without an air filter.
- > Fuel vapour pressure may build up inside the fuel tank depending on the fuel used, weather conditions and the tank venting system. To reduce the risk of burns and other personal injuries, remove the filler cap carefully to allow any pressure build up to release slowly.
- > Be aware of fire risks, explosion and inhalation risks.
- > Do not smoke while operating the product, handling fuel or near fuel.
- > Ensure the spark plug lead is secured, a loose lead may cause electrical arcing that could ignite combustible fumes and cause a fire or explosion.
- > Check regularly for leaks from the fuel cap and fuel lines.
- > Use caution when handling fuel. To avoid any accidental fires, move the product at least 3 metres (10') from the fuelling point before starting the engine.
- > Tighten the fuel cap thoroughly after refilling the fuel tank.
- > Do not operate the product if it is leaking fuel. Do not remove the fuel tank cap while the engine is running.
- > Do not store cans of fuel or refill the fuel tank in any place where there is a boiler, stove, wood fire, electrical sparks, welding sparks, or other sources of heat or fire which might ignite the fuel.
- > If you have spilt fuel on yourself or on your clothes, change your clothes and wash any part of your body that has come in contact with fuel before turning the engine on again.
- > If fuel is ignited, put out the fire with a dry powder fire extinguisher.

Vibration and noise reduction

To reduce the impact of noise and vibration emission, limit the time of operation, use low-vibration and low-noise operating modes as well as wear personal protective equipment.

Take the following points into account to minimize the vibration and noise exposure risks:

- > Only use the product as intended by its design and these instructions.
- > Ensure that the product is in good condition and well maintained.
- > Use correct application tools for the product and ensure they in good condition.
- > Keep tight grip on the handles/grip surface.
- > Maintain this product in accordance with these instructions and keep it well lubricated (where appropriate).
- > Plan your work schedule to spread any high vibration tool use across a number of days.

Emergency

Familiarise yourself with the use of this product by means of this instruction manual. Memorise the safety directions and follow them to the letter. This will help to prevent risks and hazards.

- > **Always be alert when using this product, so that you can recognise and handle risks early.** Fast intervention can prevent serious injury and damage to property.
- > **Stop the engine and unplug the spark plug connector if there are malfunctions.** Have the product checked by a qualified professional and repaired, if necessary, before you operate it again.
- > **In case of fire stop the engine and unplug the spark plug connector.** Take fire-extinguishing measures immediately if the product switch is no longer accessible.



WARNING!

Never use water to extinguish a product on fire. Burning fuel must be extinguished with special extinguishing agents. We recommend that you keep a suitable fire extinguisher within reach in your work area!

Residual risks

Even if you are operating this product in accordance with all the safety requirements, potential risks of injury and damage remain. The following dangers can arise in connection with the structure and design of this product:

- > Health defects resulting from vibration emission if the product is being used over long periods of time or not adequately managed and properly maintained.
- > Injuries and damage to property due to broken accessories or the sudden impact of hidden objects during use.
- > Danger of injury and property damage caused by flying objects.

**WARNING!**

This product produces an electromagnetic field during operation! This field may under some circumstances interfere with active or passive medical implants! To reduce the risk of serious or fatal injury, we recommend persons with medical implants to consult their doctor and the medical implant manufacturer before operating this product!

SYMBOLS

On the product, the rating label and within these instructions you will find among others the following symbols and abbreviations. Familiarise yourself with them to reduce hazards like personal injuries and damage to property.

kW	Kilowatt	cm ³	Cubic centimetre
min ⁻¹	per minute	/min	per minute
mm	Millimetre	kg	Kilogram
l	Litre		
dB(A)	Decibel (A-rated)		
m/s ²	Metres per second squared		
mm.yyyy	Manufacturing date code, year of manufacturing (yyyy) and month of manufacturing (mm)		

FP HT 26-3 Designation of the tool
 ————— Hedge trimmer
 ————— OPP Brand
 Petrol hedge trimmer



Lock / to tighten or secure



Unlock / to loosen



Caution / Warning.



Read the instruction manual.



Wear hearing protection.



Wear eye protection.



Wear respiratory protection.



Wear protective gloves.



Wear protective, slip-resistant footwear.



Wear safety helmet!



Wear face protection!



Wear tight-fitted protective clothes.



Do not expose the product to rain or wet conditions.



Open flames in the work area, around the product and in the vicinity of flammable materials are prohibited!



Do not smoke in the work area, around the product and in the vicinity of flammable materials!



Risk of fire / flammable materials



Hot surface, do not touch! High temperatures on the product's surfaces and structural parts that could cause burns, if they are touched. The product can



also stay hot for a longer period of time after operation!



This product produces noxious exhaust fumes. If the product is used improperly, these fumes can lead to poisoning, a loss of consciousness or death!



Sharp blades - Cutting of fingers or hand



Keep fingers away from moving cutting device!



Choke lever
Start (Closed Position)



Run (Open position)



Press primer 6 times.



Switch the product off and disconnect the spark plug connector before assembly, cleaning, adjustments, maintenance, storage and transportation.



Objects thrown by the product could hit the user or other bystanders. Always ensure that other people and pets remain at a safe distance from the product when it is in operation. In general, children must not come near the area where the product is.



Only use petrol/oil mixture with a ratio of 40:1.
Do not use any other mixture ratio. Always switch the product off and let it cool down, before refuelling it.

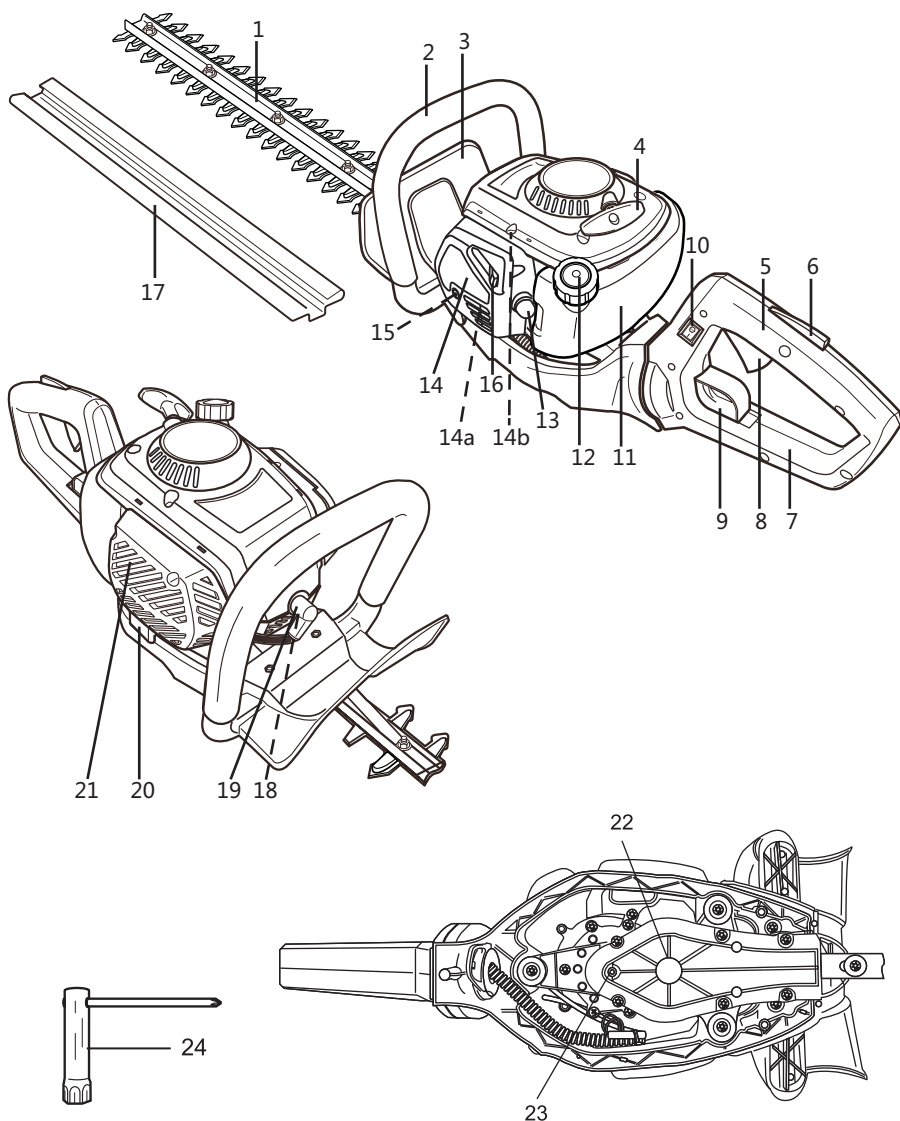


Guaranteed sound power level value in dB.



The product complies with the applicable European directives and an evaluation method of conformity for these directives was done.

YOUR PRODUCT



Getting started...

1. Cutting device
2. Front handle
3. Front safeguard
4. Recoil starter handle
5. Rear handle
6. Throttle interlock
7. Rear safeguard
8. Throttle trigger
9. Unlock lever (handle adjustment)
10. Ignition switch STOP/I
11. Fuel tank
12. Fuel tank cap
13. Primer
14. Air filter cover
 - a. Air filter
 - b. Idle speed adjustment screw
15. Fixing screw
16. Choke lever
17. Blade cover
18. Spark plug
19. Spark plug connector
20. Exhaust outlet
21. Air vents
22. Gear box
23. Lubricator
24. Multi tool (spark plug wrench with crosshead screwdriver)

SCOPE OF SUPPLY

- 1 x Hedge Trimmer
- 1 x Blade cover (17)
- 1 x Multi tool (24)
- 1 x Instruction manual (Original instructions)

Please check the completeness of the delivery and ensure that all parts are free from any transport-related damage or any damage in general. Please contact the supplier from whom you purchased the product should there be any parts missing or damaged.

TECHNICAL SPECIFICATIONS

GENERAL

- > **Engine type** : SL34G
- > **Engine displacement** : 26 cm³
- > **Engine speed at maximum power** : 8000 min⁻¹
- > **Max. engine speed** : 10000 min⁻¹
- > **Engine idle speed** : 3000 min⁻¹
- > **Clutch engagement speed** : 4000 min⁻¹
- > **Max. engine power** : 0,75 kW
- > **Fuel tank volume** : 460 ml (cm³)
- > **Petrol type** : #95, unleaded petrol
- > **Engine oil type** : 2-stroke motor oil
- > **Mixture ratio petrol : oil** : 40 : 1
- > **Spark plug** : L8RTC (Torch)
RCJ6Y(CHAMPION)
- > **Max. cutting length** : 550 mm
- > **Max. cutting capacity** : 20 mm
- > **Handle adjustment** : 3 Positions (90° / 0° / -90°)
- > **Weight** : approx. 5,3 kg
- > **Dimensions** : approx. 1160 x 250 x 260 mm

SOUND VALUES

- > **Measured sound pressure level L_{pA}** : 95,8 dB(A)
- > **Uncertainty K** : 3 dB(A)
- > **Measured sound power level L_{WA}** : 105.6 dB(A)
- > **Uncertainty K** : 2 dB(A)
- > **Guaranteed sound power level L_{WA} (according to 2000/14/EC amended by 2005/88/EC)** : 108 dB(A)

VIBRATION LEVEL

- > **Vibration level of front handle a_h** : 7,152 m/s²
- > **Vibration level of rear handle a_h** : 3,378 m/s²
- > **Uncertainty K** : 1,5 m/s²

The sound values have been determined according to noise test code given in EN ISO 10517, using the basic standards EN ISO 11201 and EN ISO 3744

Wear hearing protection! The sound intensity level for the operator may exceed 80 dB(A) and ear protection measures are necessary!

The declared vibration value has been measured in accordance with a standard test method (according to EN ISO 10517) and may be used for comparing one product with another. The declared vibration value may also be used in a preliminary assessment of exposure.

This tool may cause hand-arm vibration syndrome if its use is not adequately managed.



WARNING!

Depending on the actual use of the product the vibration values can differ from the declared total! Adopt proper measures to protect yourself against vibration exposures! Take the whole work process including times the product is running under no load or switched off into consideration!

Proper measures include among others regular maintenance and care of the product and cutting attachments, keeping hands warm, periodical breaks and proper planning of work processes!

INTENDED USE

This petrol hedge trimmer FPHT26-3 is designated with an engine displacement of 26 cm³. The product is intended for trimming hedges, bushes and shrubs. Observe the technical data for the maximum cutting capacity. Do not cut branches exceeding the stated maximum capacity.

For safety reasons it is essential to read the entire instruction manual before first operation and to observe all the instructions therein.

This product is intended for private domestic use only, not for any commercial trade use. It must not be used for any purposes other than those described.

ACCESSORIES (NOT SUPPLIED)

- Lubricant for blade
- Air filter oil
- Soft cloth
- Proper fuel pump
- Fuel mixing container
- Suitable personal protective equipment
- Fuel
- Engine oil
- Funnel
- Grease
- Lubricating gun

SET UP



WARNING!

Before using the product, familiarise yourself with the operating features read the entire instruction manual paying particular attention to the safety rules and operating procedures.

UNPACKING

- > Unpack all parts and lay them on a flat, stable surface.
- > Remove all packing materials and shipping devices if applicable.
- > Make sure the delivery contents are complete and free of any damage. If you find that parts are missing or show damage do not use the product but contact your dealer. Using an incomplete or damaged product represents a hazard to people and property.
- > Ensure that you have all the accessories and tools needed for assembly and operation. This also includes suitable personal protective equipment.

BLADE COVER

- > Remove the blade cover (17) from the cutting device (1) before operation (Fig. 1).

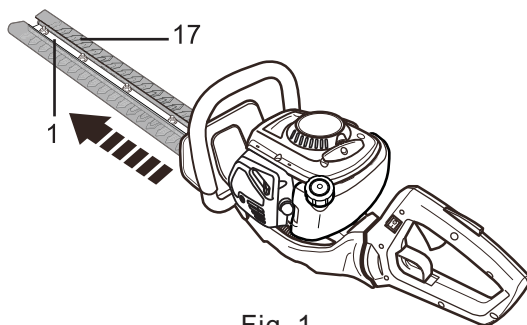


Fig. 1



NOTE: Always attach the blade cover (17) when the product is not in use, for storage and transportation. To attach the blade cover, align and push the blade cover onto the cutting device (1).

HANDLE ADJUSTMENT

Adjust the handle to fit the application.

- > Pull the unlock lever (9) backward and hold it in position (Fig. 2).
- > Adjust the handle (5) to required position and release the unlock lever (9). Keep turning the handle until it snaps securely into place (Fig. 3-6).

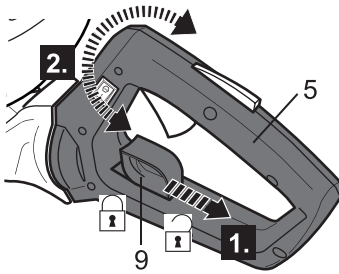
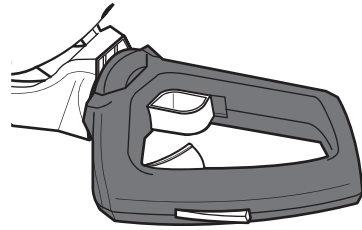
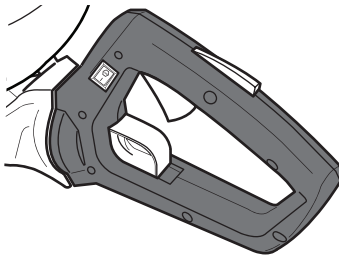


Fig. 2



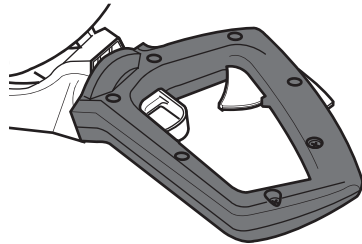
left position (-90°)

Fig. 3



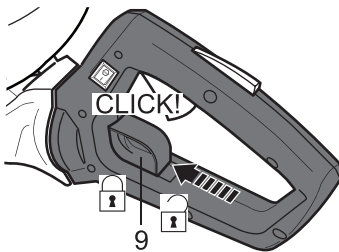
initial position (0°)

Fig. 4



right position (90°)

Fig. 5



locking position

Fig. 6



WARNING!

Only adjust the handle position when the engine is switched off! Always ensure that the handle locks in one of the end positions, never use it in any intermediate position!

FUEL AND ENGINE OIL



NOTE: This product is not supplied with fuel-oil mixture in the engine! Before operating this product it is essential to fill it with fuel-oil mixture!



This product is equipped with a 2-stroke engine, the fuel and oil tank are combined and it is essential to fill a fuel-oil mixture before operating this product. Observe the technical specifications for suitable fuel and engine oil.



WARNING!

Fuel and oil are highly inflammable! Fumes will explode if lit! Ensure that there are no naked flames around the product! Do not smoke while filling fuel and oil!



- > Place the product on a stable, level surface. We recommend laying a non-flammable sheet under the product.
- > Mix a regular-grade unleaded petrol and a quality engine oil for air cooled 2-stroke engines in a suitable container (Fig. 7). Fill half the quantity of the petrol to be used into the container. Then add the entire quantity of oil and shake the prepared fuel mixture. Add the remaining quantity of petrol. Shake the fuel mixture thoroughly before filling the fuel tank.
- > Use an anti-oxidant added quality oil expressly labelled for air-cooled 2 stroke engine use (JASO FC GRADE OIL or ISO EGC GRADE).

Petrol	Oil
[ml]	[ml]
100	2,5
200	5,0
300	7,5
400	10,0
500	12,5



Fig. 7

- > Do not use BIA or TWC (2 stroke water-cooling type) mixed oil.
- > The recommended mixing ratio for petrol:oil is 40:1.



NOTE: Never mix fuel and oil directly in the tank of the product. Use a fuel mixing container that helps to ensure the correct mixing ratio. Shake gently to ensure a thorough mix of fuel and oil.

- > Unscrew and remove the fuel tank cap (12).
- > Fill correctly mixed fuel/oil into the tank using a fuel funnel fitted with a filter to avoid debris entering the tank. Do not overfill. Leave a minimum 5 mm of space between the top of the fuel and the inside edge of the tank (11) to allow for expansion (Fig. 8).

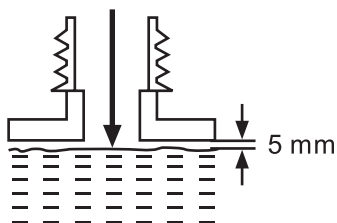


Fig. 8

- > Avoid spilling and overfilling the tank.
- > Wipe up spilled fuel with a soft cloth and refit the fuel tank cap (12).
- > Always dispose of fuel, used oil and soiled objects according to local regulations (see section “**Recycling and disposal**”).



NOTE: Fuel and oil deteriorate over time. It may be difficult to start the engine if you use fuel which has been kept for more than 30 days.



Towards the end of the season, it is advisable to put only as much fuel in the tank as you need for each use, since it should be completely used up before storing the product.

Empty remaining fuel from the tank when storing the product for over 30 days.

HANDLE CONTROLS

There are three controls at the handle (5) with the following function:

- > The ignition switch (10) electrically stops the engine.
Before you start the engine, you always need to put the ignition switch (10) to the "I" position.
- > The throttle interlock (6) prevents unintentional activation of the throttle trigger (8) until manually pressed.
- > Adjust the engine speed with the throttle trigger (8).

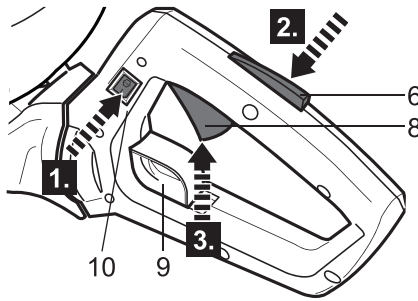


Fig. 9



NOTE: The throttle trigger will not work if the unlock lever (9) did not snap securely into place.

OPERATING CONTROL

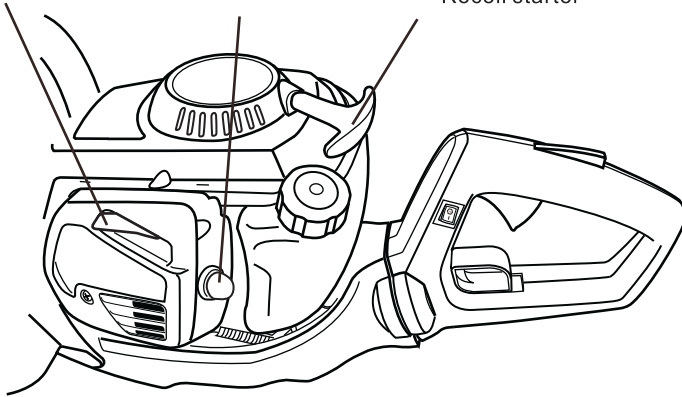
Choke lever



Primer



Recoil starter



STEP UP



Assemble



Adjust



Add petrol/oil mixture(40:1)

COLD START



Set ignition switch to "I"



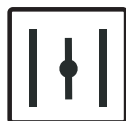
Press primer until fuel is visible



Close the choke



Pull the recoil starter handle 3-4 times



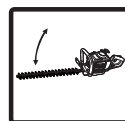
Open choke



Pull the recoil starter handle until the engine starts



Run idle for 10-15s



Operate

WARM START



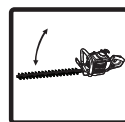
Set ignition switch to "I"



Open choke



Pull recoil starter handle until the engine starts



Operate

STOPPING



Release the throttle control and interlock



Run idle



Set ignition switch to "O"



Empty the fuel tank



Maintain



Store

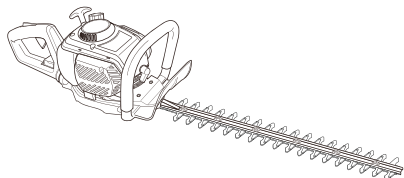


WARNING! This quick start provides only a short overview of how to start and stop the product! For safe use, it is essential to read the entire instruction manual before first use!



In more detail...

OPERATING INSTRUCTIONS	25-31
MAINTENANCE AND CARE	32-38
TROUBLESHOOTING	39-40
RECYCLING AND DISPOSAL	41
GUARANTEE	42
EC DECLARATION OF CONFORMITY	43



GENERAL OPERATION

- > Check the product as well as accessories for damage before each use. Do not use the product if it is damaged or shows wear.
- > Double check that accessories or cutting device are properly fixed.
- > Always hold the product on its handles (3, 5). Keep the handles dry to ensure safe support.
- > Ensure that the air vents (21) are always unobstructed and clear. Clean them if necessary with a soft brush. Blocked air vents may lead to overheating and damage the product.
- > Switch the product off immediately if you are disturbed while working by other people entering the working area. Always let the product come to complete stop before putting it down.
- > Do not overwork yourself. Take regular breaks to ensure you can concentrate on the work and have full control over the product.

TRIMMING TIMES

green leaf hedges	June to October
evergreens	April and August
conifers and other fast growing shrubs	every 6 - 8 weeks

STARTING/STOPPING

Cold start (Fig. 10, 11)



WARNING! Make sure that the cutting device is not touching the ground or other objects when starting the product!
Make sure that the rear handle is in the upright position.

- > Place the product on level ground and ensure that no objects or obstructions could come in contact with the blades.
- > Set ignition switch (10) to "I" (ON) position.
- > Press the primer (13) 5-6 times.
- > Move the choke lever (16) to "Start" position.
- > Hold the top cover firmly with your left hand and put your right knee onto the rear handle (5).
- > Pull the recoil starter handle (4) lightly until you feel resistance then pull it briskly 3-4 times. The engine would normally not start at this stage.



WARNING! Allow the rope to return slowly and in a controlled manner each time it is pulled!

- > Move the choke lever (16) to "Run" position. Pull the recoil starter handle (4) lightly until you feel resistance. Repeat until the engine starts.

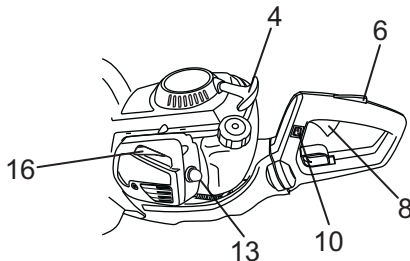


Fig. 10

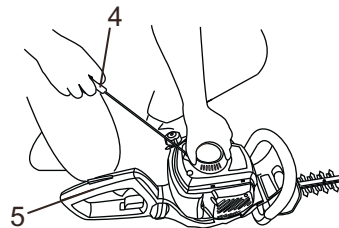


Fig. 11

Warm start (Fig. 12, 13)



WARNING! Make sure that the cutting device is not touching the ground or other objects when starting the product!

- > Set the ignition switch (10) to “I” (ON) position.
- > Do not press the primer (13).
- > Move the choke lever (16) to “**I** | **Run**” position.
- > Hold the top cover firmly with your left hand and put your right knee onto the rear handle (5).
- > Pull the recoil starter handle (4) lightly until you feel resistance then pull it briskly. Repeat until the engine starts.



WARNING! Allow the rope to return slowly and in a controlled manner each time it is pulled!

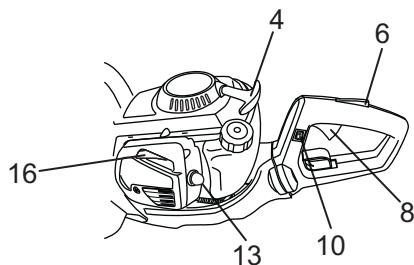


Fig. 12

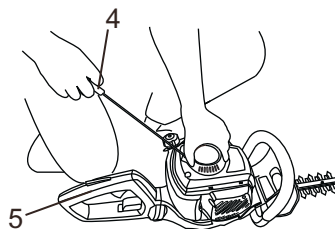


Fig. 13



NOTE: If the engine does not start, the engine may be flooded. Flooding is caused by too much fuel mixture applied at the wrong time and can prevent a product from starting. DO NOT prime the product again. Follow below procedure:

Set the ignition switch (10) to "**STOP**" (OFF) position. Squeeze the throttle interlock (6) and throttle trigger (8) to release the choke. Remove the spark plug (see "Maintenance and care - Spark plug"). Dry the spark plug. Pull the recoil starter handle (4) for several times to drain the fuel from the combustion chamber. Refit the spark plug. Clean up any spilled fuel and move the product at least 3 metres (10') away before starting the engine. Start the product as described in section "Warm start".

Stopping

- > Release the throttle trigger (8) and let the product run at its idle speed for 10 - 15 seconds.
- > Set the ignition switch (10) to its "**STOP**" (OFF) position (Fig. 14).

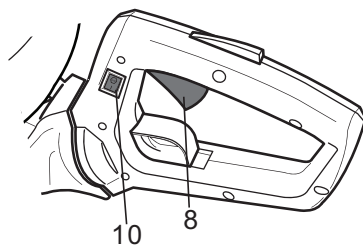


Fig. 14



WARNING! The cutting device will continue to run for some time even after the engine has been switched off! Wait until the cutting device has come to a complete stop before placing the product on the ground!

TRIMMING



NOTE: Try to keep the cutting device angled at approximately 15° to the cutting surface.

- > Cut and remove branches exceeding the cutting capacity of this product using a proper pruner before operation.
- > Adjust the handle so that it fits the intended cut.



WARNING! When operating the product, keep the exhaust outlet (20) away from your body (Fig. 15-20).

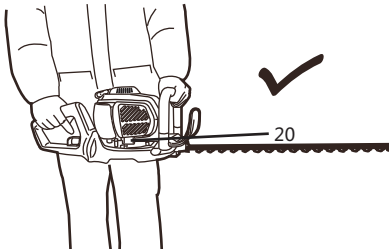


Fig. 15, initial position (0°)

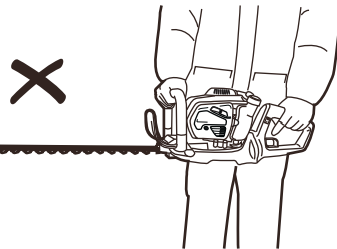


Fig. 16, initial position (0°)

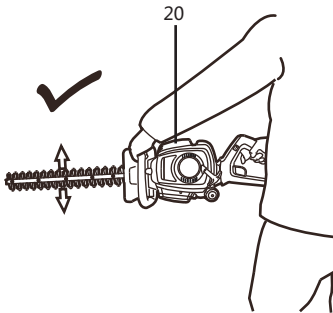


Fig. 17, right position (90°)

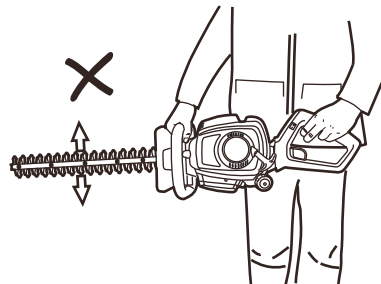


Fig. 18, right position (90°)

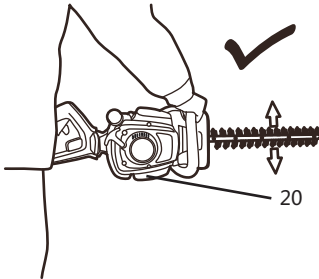


Fig. 19, left position (-90°)

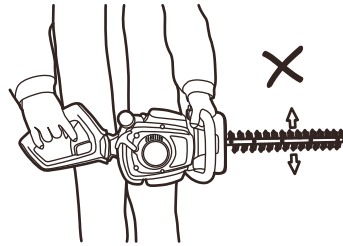


Fig. 20, left position (-90°)

- > Start the product as described. Press the throttle interlock, hold it in position and then press the throttle trigger to engage the cutting blade. Operate the engine at full throttle to maintain a proper cutting speed.
- > Move the cutting device lightly through the cutting surface in a sweeping motion following the shape of the hedge or shrub. A slight tilt downwards of the cutting device in the direction of motion is recommended for optimum cutting performance.
- > Do not rush and do not attempt to cut too much with one stroke of the cutting device.
- > First cut both sides from the bottom cutting upwards to the top. This will prevent any of the trimmings falling into the path of the area still to be cut (Fig. 21).

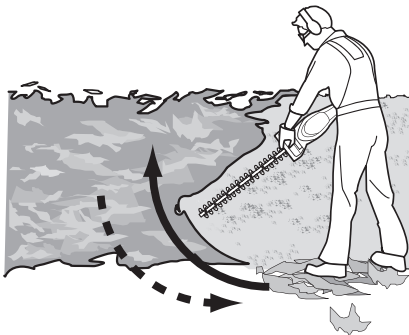


Fig. 21

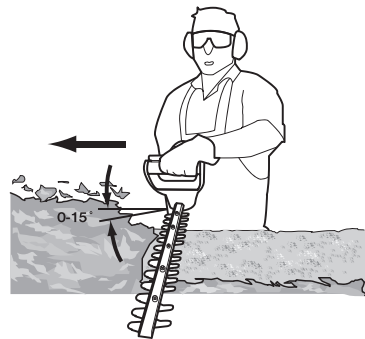


Fig. 22

- > After cutting the sides proceed to the top (Fig. 22). Try to keep the cutting device angled at approximately 15° to the cutting surface.
- > Cut in a number of stages if the area being cut is particularly long to achieve a better result; smaller trimmings will allow for easy composting.



NOTE: When shaping it is advisable to achieve a trapezoidal shape (Fig. 23). A trapezoidal cut corresponds to the natural growth of plants and results in optimal hedge growth, as it will expose more light to the lower end of the hedge.

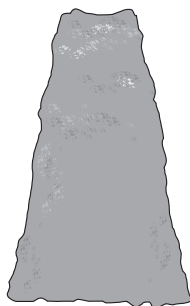


Fig. 23



WARNING! TO STOP THE ENGINE IN AN EMERGENCY:

Press and hold the ignition switch (10) to “STOP” position until engine stops.

AFTER USE

- > Switch the product off, allow the engine to cool down and then remove the spark plug connector.
- > Check, clean and store the product as described below.

MAINTENANCE AND CARE



WARNING! Always switch the product off, let the product cool down and disconnect the spark plug connector before performing inspection, maintenance and cleaning work!

- > Keep the product clean. Remove debris from it after each use and before storage.
- > Regular and proper cleaning will help ensure safe use and prolong the life of the product.
- > Inspect the product before each use for worn and damaged parts. Do not operate it if you find broken and worn parts..



WARNING! Only perform repairs and maintenance work according to these instructions! All further works must be performed by a qualified specialist!

GENERAL CLEANING

- > Clean the product with a damp cloth and mild soap. Use a brush for areas that are hard to reach.
- > In particular clean the air vents (21) after every use with a cloth and brush.
- > Remove stubborn dirt with high pressure air (max. 3 bar).



NOTE: Do not use chemical, alkaline, abrasive or other aggressive detergents or disinfectants to clean this product as they might be harmful to its surfaces.

- > Check for any damage and wear. Repair damages in accordance with this instruction manual or take it to an authorised service centre before using the product again.

CUTTING DEVICE



WARNING! Wear safety gloves when working on the cutting device and close to it! Use appropriate tools to remove debris, e.g. a brush or wooden stick!

Never use your bare hands!

The replacement of the cutting device should be done by a qualified specialist! Rework or sharpening blades is not recommended unless it is done by a repair service or a similarly qualified specialist!

- > Keep the cutting device (1) clean and free of debris. Remove trimmings.
- > Apply a small amount of suitable lubricant on the cutting device (1) to retain a good cutting performance (Fig. 24).

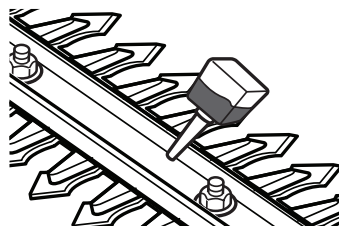


Fig. 24

- > Keep the cutting device (1) sharp. Have a worn or damaged cutting device replaced with a new one of the same type by a qualified specialist.
- > Tighten loose nuts on the cutting device (1) with a proper wrench with 5 N.m min, 7 N.m max. to ensure safe operation of your product (Fig. 25).

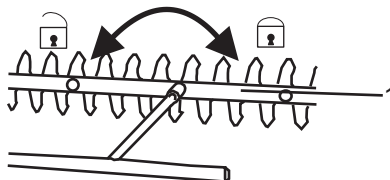


Fig. 25

AIR FILTER

- > Inspect the air filter (14a) regularly. Replace it with a new one if necessary.
- > Open the air filter case by loosening the fixing screw (15) with the Multi tool (24).
- > Remove the screw, cover (14) and take the filter (14a) out (Fig. 26).

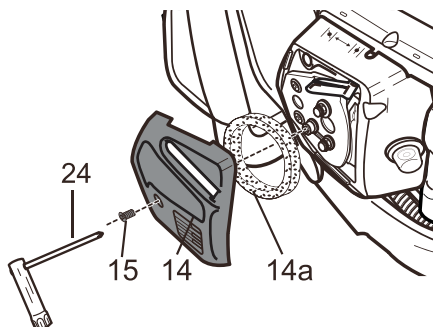


Fig. 26

- > Tap the filter on a stable surface to remove dust. Use compressed air (max. 3 bar) to remove stubborn dust.
- > Apply a small amount of air filter oil on the filter to increase the performance of the filter. Wring out surplus oil and put the filter into the case.
- > Put the air filter cover (14) back in place and fix it with the screw (15).

FUEL TANK

- > Empty the fuel tank when storing the product over 30 days to prevent the fuel from deteriorating.
- > Unscrew and remove the fuel tank cap (12) and use a proper fuel pump to empty the fuel into a suitable container.

FUEL FILTER

The fuel tank (11) of this product is fitted with a filter located at the free end of the fuel pipe. Ask an authorised service centre or similar qualified person to check and where necessary replace it at regular intervals.

SPLUG PLUG

- > Inspect the spark plug (18) at least every 25 hours or prior to long-term storage over 30 days if the use has not been this high.

Clean or replace with a new spark plug if necessary, refer to section “**TECHNICAL SPECIFICATIONS**”.

- > Unplug the spark plug connector (19) (Fig. 27).
- > Loosen the spark plug with the multi tool (24) anticlockwise and carefully remove it (Fig. 28).

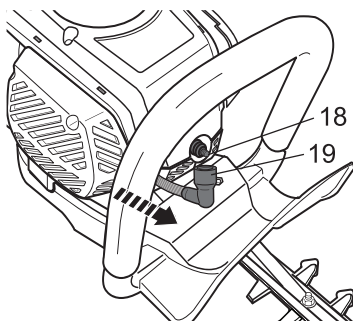


Fig. 27

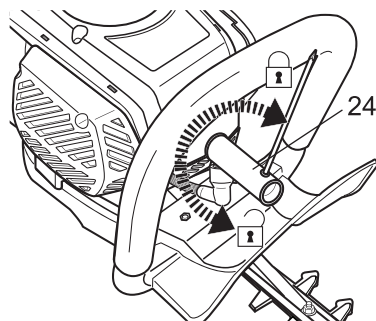


Fig. 28

- > Check the spark plug (18) for damage and wear. The colour of the electrode should be light-brown coloured.
- > Remove debris from the electrode with a soft wired brush; avoid heavy cleaning of the electrode.
- > Dry the spark plug (18) with a soft cloth if it is wet from fuel.
- > Check the spark plug gap; it should be 0.6 – 0.7 mm (Fig. 29).

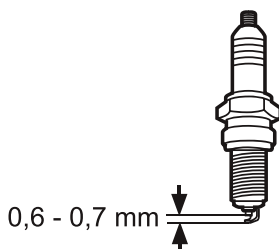


Fig. 29

- > Replace with a new spark plug (18) if either the electrode or the insulation is damaged.
- > When replacing the spark plug (18) first screw it in hand tight and then lightly tighten it with the multi tool (24).

GEAR BOX

- > Lubricate the gear box every 30 hours or more frequent at heavy use.
- > Add grease through the lubricator (23) with an lubricating gun until the grease comes out between the gear box (22) and the cutting device (1) (Fig. 30).

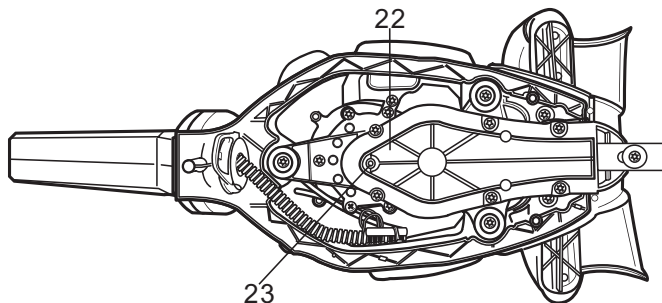


Fig. 30

- > Remove any grease from the product.

CARBURETTOR

The carburettor is pre-set by the manufacturer. Should it be necessary to make any changes please contact an authorised service centre or a similarly qualified person. Do not attempt to make any adjustments by yourself.

REPAIR

This product does not contain any parts that can be repaired by the consumer. Contact an authorised service centre or a similarly qualified person to have it checked and repaired.

STORAGE

- > Drain all fuel from tank into a container. Run engine until it stops. Always drain the fuel tank outdoors.
- > Switch the product off and disconnect the spark plug connector.
- > Clean the product as described above.
- > Attach the blade cover.
- > Store the product and its accessories in a dry, frost-free place.
- > Always store the product in a place that is inaccessible to children. The ideal storage temperature is between 10 and 30°C.
- > We recommend using the original package for storage or covering the product with a suitable cloth or enclosure to protect it against dust.

TRANSPORT

- > Switch the product off and disconnect the spark plug connector.
- > Attach the blade cover.
- > Always carry the product on its handles surfaces.
- > Protect the product from any heavy impact or strong vibrations which may occur during transportation in vehicles.
- > Secure the product to prevent it from slipping or falling over.

MAINTENANCE TABLE

Regularly check and maintain the product in accordance with the maintenance table.

Part	To do	Before /after each use	10 hours	25 hours	50 hours / half year	100 hours / once a year
Spark plug	check			X		
Spark plug	clean			X		
Spark plug	replace	whenever necessary				
Air filter	check	X				
Air filter	clean			X		
Air filter	replace	whenever necessary				
Fuel filter	check			X		
Fuel filter	clean			X		
Fuel filter	replace	whenever necessary				
Cutting blade	check	X				
Cutting blade	lubricate	X				
Cutting blade	clean	X				
Cutting blade	replace	whenever necessary				

In more detail...

TROUBLESHOOTING

Suspected malfunctions are often due to causes that the user can fix themselves. Therefore, check the product using this section. In most cases the problem can be solved quickly.



WARNING! Only perform the steps described within these instructions! All further inspection, maintenance and repair work must be performed by an authorised service centre or a similarly qualified specialist if you cannot solve the problem yourself!

Problem	Possible cause	Solution
Engine does not start	Not enough fuel in fuel tank	Add fuel
	Primer has been not pressed at cold start	Press the primer and restart
	Primer has been pressed at warm start	Dry spark plug
	Spark plug is wet	Dry spark plug
	Spark plug is damaged	Replace spark plug
	Spark plug connector lose	Attach properly
	Ignition switch (10) is not pressed to "I" position.	Press ignition (10) to "I" position
The engine is too warm	Wait until the product completely cools down	
Engine stops	Not enough fuel in the tank	Add fuel
	Cutting device is blocked	Remove blockage
Engine starts but will not accelerate	Engine requires to warm up	Allow engine to completely warm up. Let it run at idle speed for 2 or 3 minutes.
Engine does not reach full speed and emits excessive smoke	Fuel mixture is not good	Use fresh fuel and the correct 2-stroke lubricant oil, in a correct fuel/oil ratio.
	Air filter is dirty	Clean air filter. Refer to cleaning the air filter earlier in this manual

Unsatisfactory result	Cutting device is worn	Have a specialist to sharpen or replace it
	Thickness of branches exceeds capacity	Only cut branches within the limits
Excessive vibration/noise or exhaust	Cutting device is dull/damaged	Have it replaced with a new one
	Bolts/nuts are loosen	Tighten bolts/nuts
	Petrol/oil is incorrect	Empty unused petrol/oil and refill with the correct petrol/oil

RECYCLING AND DISPOSAL

- > The product comes in a package that protects it against damage during shipping. Keep the package until you are sure that all parts have been delivered and the product is functioning properly. Recycle the package afterwards.
- > Old products are potentially recyclable and do not, therefore, belong in your household rubbish. You are requested to assist us and our contribution to saving resources and protecting the environment by handing in this product at an equipped collection centre (if there is one available).
- > Petrol, oil, used oil, mixtures of oil and petrol and objects contaminated with those, e.g. cleaning cloths; do not belong with household waste. Dispose of oil-contaminated items in accordance with the local guidelines and hand them in at recycling centres.

GUARANTEE

- > This product carries a guarantee of 12 months starting from the day of purchase. Please retain your receipt as a proof.
- > This guarantee specifically excludes losses due to:
 - Normal wear and tear, including accessory wear
 - Overload, misuse or neglect
 - Failure of consumable items (such as batteries)
 - Repairs attempted by anyone other than an authorized agent
 - Accidental damage caused by foreign objects or substances
 - Lack of routine maintenance
 - Failure to follow manufacturer's guidelines
 - Loss of use of the goods
- > Due to continuous product improvement, we reserve the right to change the product specification without prior notice.
- > This guarantee does not affect your statutory rights.
- > For any inquiries relating to the guarantee please contact your retailer : If you purchased this product in B&Q store or website then call 0333 014 3087. If you bought this product in SFX outlet or website then call 03330 112 112

For after sales
help and advice,
please call

cs@b-gr8.co.uk

HELPLINE

0333 2000 339

CE DECLARATION OF CONFORMITY



We

Kingfisher International Products B.V.
Rapenburgerstraat 175E
1011 VM Amsterdam
The Netherlands

Declare that the product
petrol hedge trimmer FPHT26-3

Serial number: from 000001 to 999999

Complies with the essential health and safety requirements of the
following directives:

The Machinery Directive 2006/42/EC

- EN ISO 10517:2019

The EMC Directive 2014/30/EU

- EN ISO 14982:2009

The RoHS Directive 2011/65/EU (Restrictions of the Use
of Certain Hazardous Substances in Electrical and
Electronic Equipment) and its amendments (EU)
2015/863, (EU)2017/2102

The Outdoor Noise Directive 2000/14/EC & 2005/88/EC

- Measured Sound Power Level: 106 dB(A)
- Guaranteed Sound Power Level: 108 dB(A)
- Conformity assessment procedures: Annex V of
the directive

The Emission of Pollutants directive (EU) 2016/1628

- EC type-approval NO:
e24*2016/1628*2016/1628 SHA1/P*0017*00
- Engine model: SL34G

Authorized Signatory and technical file holder:

Kingfisher International Products B.V.
Rapenburgerstraat 175E
1011 VM Amsterdam
The Netherlands
Eric Capotummino
Group Quality Director

on: 16/09/2019

Manufacturer • Fabricant • Producent • Producător • Fabricante:

UK Manufacturer:

Kingfisher International Products Limited,
3 Sheldon Square, London, W2 6PX,
United Kingdom
www.kingfisher.com/products

EU Manufacturer:

Kingfisher International Products B.V.
Rapenburgerstraat 175E
1011 VM Amsterdam
The Netherlands
www.kingfisher.com/products

EN	www.diy.com www.screwfix.com www.screwfix.ie	To view instruction manuals online, visit www.kingfisher.com/products
FR	www.castorama.fr www.bricodepot.com	Pour consulter les manuels d'instructions en ligne, rendez-vous sur le site www.kingfisher.com/products
PL	www.castorama.pl	Aby zapoznać się z instrukcją obsługi online, odwiedź stronę www.kingfisher.com/products
ES	www.bricodepot.es	Para consultar los manuales de instrucciones en línea, visite www.kingfisher.com/products
PT	www.bricodepot.pt	Para consultar manuais de instruções online, visite www.kingfisher.com/products
RO	www.bricodepot.ro	Pentru a consulta manualele de instrucțiuni online, vizitați www.kingfisher.com/products
TR	www.koctas.com.tr	Ithalatçı Firma: KOÇTAŞ YAPI MARKETLERİ TİC. A.Ş. Taşdelen Mah. Sırrı Çelik Bulvarı No:5 34788 Taşdelen/Çekmeköy/İSTANBUL Tel: +90 216 4300300 Faks: +90 216 4844313 www.koctas.com.tr Kullanım kılavuzuna internet üzerinden ulaşmak için www.kingfisher.com/products adresini ziyaret edin Yetkili servis istasyonları ve yedek parça temini için aşağıda yer alan Koçtaş Müşteri Hattı ve Koçtaş Genel Müdürlük irtibat bilgilerinden faydalanınız. KOÇTAŞ MÜŞTERİ HİZMETLERİ 0850 209 50 50